

Interaction between auditory and motor systems in speech perception

Department of Psychology, Speech and Hearing Research Center, Key Laboratory of Machine Perception (Ministry of Education), PKU-IDG/McGovern Institute for Brain Research, Peking University, Beijing 100871, China

fi

fi

Keywords:

Introduction

The Motor Theory of Speech Perception

fi

et al.

fi

fi

**Anatomical and Functional Associations between
the Auditory and Motor Systems**

fi

fi

et al.

fi

et al.

fl

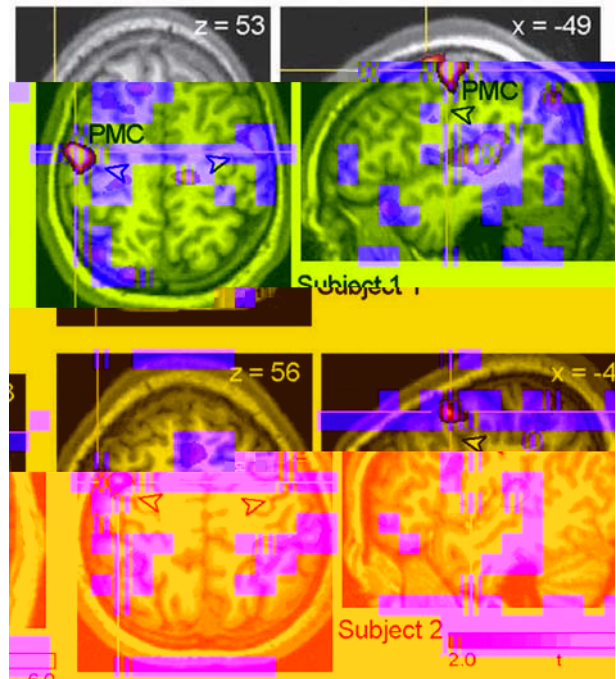


Fig. 2. Representative fMRI activation in the premotor cortex (PMC) associated with discriminating voiceless stop consonants in single syllables masked by white noise in two representative participants. Regions selected for stimulation are shown in bright colors. Arrowheads indicate the location of the central sulcus (adapted from Meister *et al.* [33] with permission).

et al.

fl



fi

et al.

fi

fi

**Speech Perception under “Cocktail Party”
Conditions**

fi

Conclusion

fi

ACKNOWLEDGEMENTS

REFERENCES

et al.

-

-

-

-

-

-

-

-

et al.

-

-

-

-

-

-

-

-

-

-

-

-

fi

-