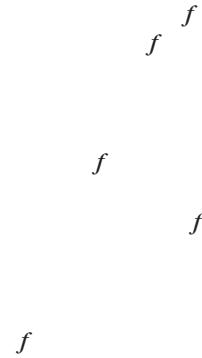


Human Auditory Cortex Activity Shows Additive Effects of Spectral and Spatial Cues during Speech Segregation

In noisy social gatherings, listeners perceptually integrate sounds originating from one person's voice (e.g., fundamental frequency (f_0) and harmonics) at a particular location and segregate these from concurrent sounds of other talkers. Though increasing the spectral or the spatial distance between talkers promotes speech segregation, synergetic effects of spatial and spectral distances are less well understood. We studied how spectral and/or spatial distances between 2 simultaneously presented steady-state vowels contribute to perception and activation in auditory cortex using magnetoencephalography. Participants were more accurate in identifying both vowels when they differed in f_0 and location than when they differed in a single cue only or when they shared the same f_0 and location. The combined effect of f_0 and location differences closely matched the sum of single effects. The improvement in concurrent vowel identification coincided with an object-related negativity that peaked at about 140 ms after vowel onset. The combined effect of f_0 and location closely matched the sum of the single effects even though vowels with different f_0 , location, or both generated different time courses of neuromagnetic activity. We propose that during auditory scene analysis, acoustic differences among the various sources are combined linearly to increase the perceptual distance between the co-occurring sound objects.

Keywords: attention, MEG, scene analysis, streaming, speech

Introduction



%

f

o o o o o o o o o o

f f

~ ~

f

f

f

Δf

f

o

o

Δf

f

f

f

f

%

f

o

Material and Methods

Participants

= ±

”

3

” ” ”

= ±

Data Acquisition

Stimuli and Task

3

f

±

Data Analysis

f

f

f

Dipole Source Analysis

%

=

,

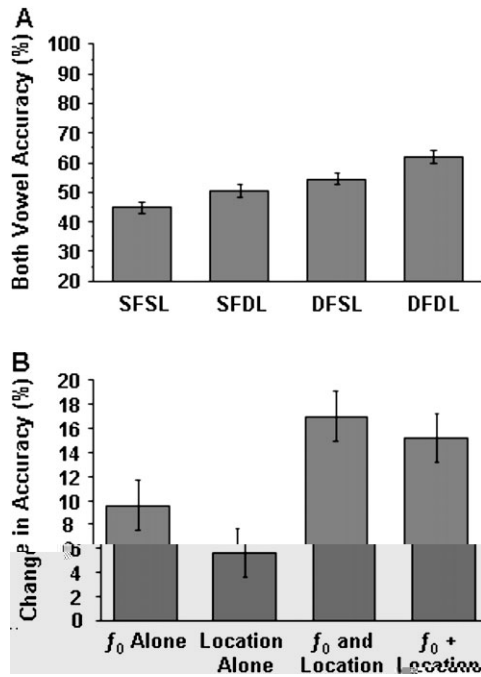


Figure 2. Behavioral performance and behavioral benefit in Experiment 2. (A) Proportion of trials in which both vowels were correctly identified under 4 stimulus types: SFSL, SFDL, DFSL, and DFDL. (B) Changes in accuracy of identification of both vowels (compared with performance when 2 vowels shared same f_0 and location) for stimulus conditions with only Δf_0 (f_0 alone), Δ location (location alone), and both Δf_0 and Δ location (f_0 and location). A linear sum of change by Δf_0 alone and that by Δ location alone is shown also ($f_0 +$ location). The error bars (\pm standard error of the mean) indicate the within-subject variability for each condition.

$F = P <$

Δf Δ

Δf Δ Δf Δ $P <$

Δf Δ

Δf Δ

Di le S ce Wa ef m

A

B

C

$P <$

$= P <$

$=$

A

Δf Δ

$f F = P < f$

$F = P <$

$F <$

Δf Δ

Δf Δ

f

$F =$

$P =$

$F = P <$

$F = P <$

f

$F =$

$P =$

Objec-Rela ed Nega i i

Δf

Δ

f

f

f

\sim

Δf Δ \sim \sim Δ Δf

B

f

$F =$

$P <$

Δf Δ

$P <$

Δf Δ

$F =$

$P <$

Δf Δ

Δf Δ

$P <$

$F =$

$P <$

$P <$

$F = P <$

$P <$

$F = P <$

Δf $F =$

Δf $F =$

Δf $F =$

Δf $F =$

C

$$P < \Delta \quad \Delta \quad = - \quad P < \\ \Delta f \quad \Delta \quad = - \quad P >$$

C

$$\Delta \quad - \quad P = \quad \Delta f$$

$$F = P =$$

$$F <$$

$$\Delta f \quad - \quad \Delta \quad - \quad \Delta f \quad \Delta$$

ER-SAM S ce Ac i i

f

f

f

$$P < \\ P <$$

$$\Delta f \quad \Delta$$

B ain-Beba i C ela i n

$$F = P =$$

$$\Delta f \quad \Delta$$

$$\Delta f \quad \Delta$$

$$\Delta f \quad = -$$

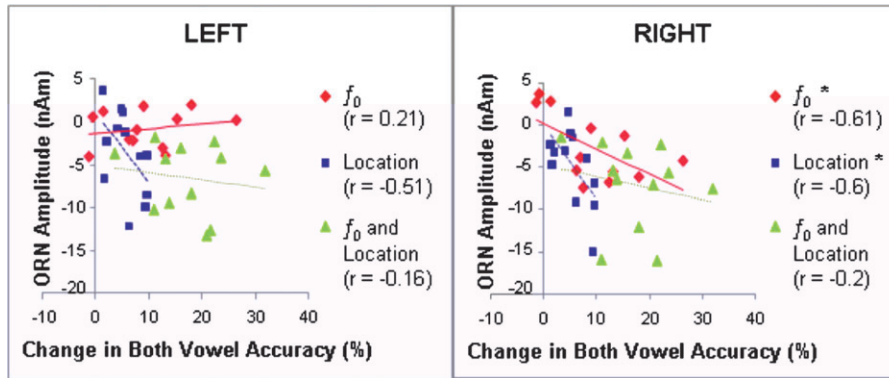


Figure 5. Brain-behavior correlation. Individual changes in source waveform amplitude during the ORN interval (140–180 ms) are plotted against the listeners' changes in accuracy of identification of both vowels for stimuli with Δf_0 alone (f_0), Δ location alone (location), and both Δf_0 and Δ location (f_0 and location). * $P < 0.05$.

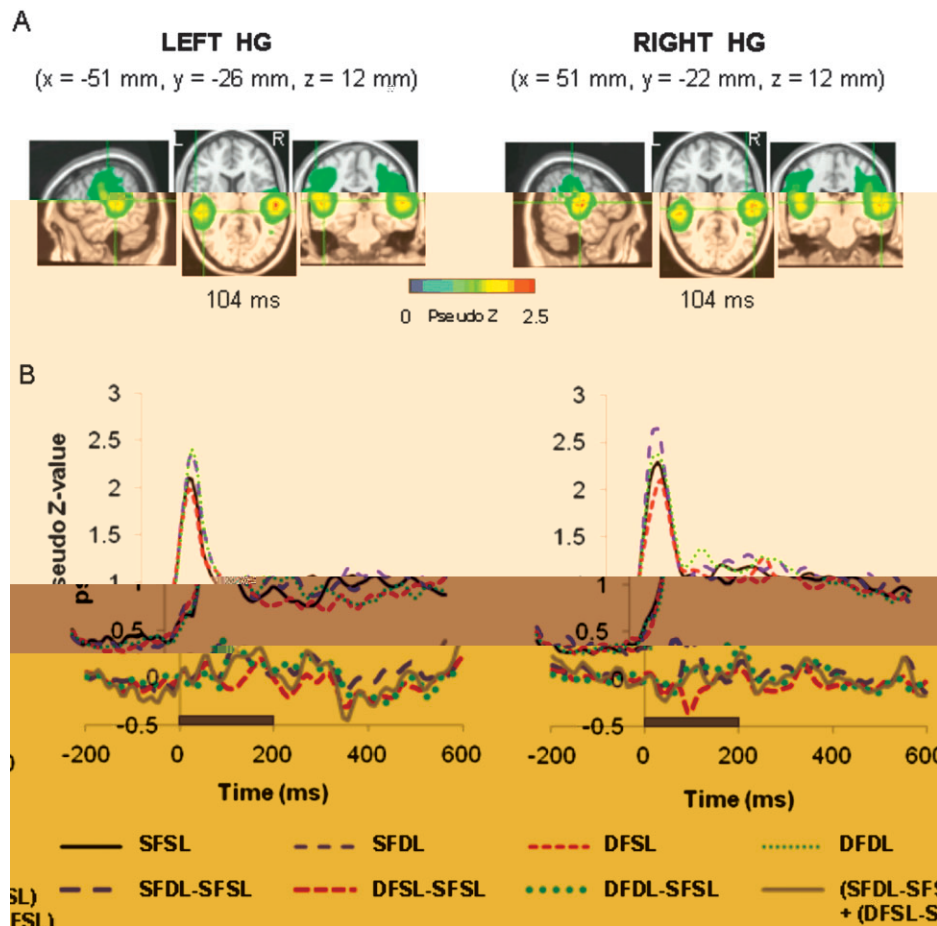
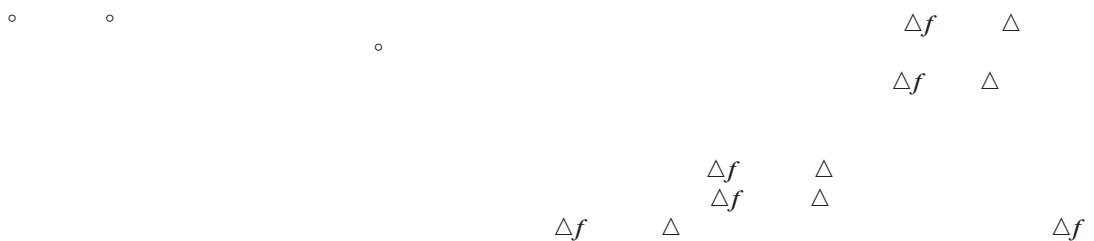


Figure 6. ER-SAM maps and source waveforms in left and right Heschl's gyri. (A) Thresholded group-mean ER-SAM maps for SFSL condition at N1m latency of 104 ms. (B) Time courses of source activities associated with 4 stimulus conditions (SFSL, SFDL, DFSL, and DFDL) and 4 differences between conditions [(SFDL-SFSL), (DFSL-SFSL), (DFDL-SFSL), (SFDL-SFSL) + (DFSL-SFSL)]. Pseudo Z values represent the ratio of signal-to-noise power of the evoked response. Note that in both hemispheres, the difference in source waveforms for both Δf_0 and Δ location (DFDL-SFSL) closely matches the linear sum of Δf_0 and Δ location alone [(SFDL-SFSL) + (DFSL-SFSL)].



Δ

”

Δf Δf Δ
 Δ

Δf Δ

,

Δf

Δf Δ

f

Δ

Δf

Δ Δf

Δ

Δf Δ

,

f

Funding

”

+

+ + <

Notes

C n i c f I n e e

References

”

”

,

